

- NOTES**
1. DOOR FRAME TO BE STEEL OF MIN 5mm THICKNESS TO ACCEPT M8 FIXING BOLTS, AND TAKE WEIGHT OF DOOR (approx 20kg/m²).
 2. ALL INSIDE SURFACES OF THE FRAME TO BE MIN 150mm. HEADER AND JAMBS TO BE FLUSH AND FREE FROM ANY PROJECTIONS.
 3. TOP TRACK IS ONLY USED AS GUIDE. THE DOOR IS SIDE-HUNG AND THE WEIGHT IS SUPPORTED AT THE JAMB HINGES.
 4. THE FLOOR MUST BE LOWER THAN OR LEVEL WITH THE THRESHOLD IN THE FOLDING AREA MARKED ***** TO ALLOW LEAVES TO OPEN EASILY.

NUMBER OF DOORS LH (AS DRAWN) RH

FINISH (specify material and colour)

EXTERNAL SKIN:

INTERNAL SKIN:

OPTIONS (please tick or indicate qty reqd)

VISION PANELS - SEE GLAZING LAYOUT DRAWING

680x380 PLASTIC EASIFIT

400x600 ALUMINIUM FRAME

400x1200 ALUMINIUM FRAME

600x600 ALUMINIUM FRAME

600x1200 ALUMINIUM FRAME

WICKET DOOR (in panels 3 or 4 only)

STANDARD LEVER HARDWARE

EMERGENCY ESCAPE FURNITURE

LOCKING and HANDLES

ESPAGNOLETTE BOLT BETWEEN LEAVES

182 AND 586

ACTIVE LEAF HARDWARE

HEWI LEVER FURNITURE AND SASH LOCK

ESPAGNOLETTE BOLT

THRESHOLD PLATE

NONE - (NOT RECOMMENDED)

SURROUND FRAME

150 x 75 RSA REAR MOUNTED FRAME

200 x 100 RHS BETWEEN WALL FRAME

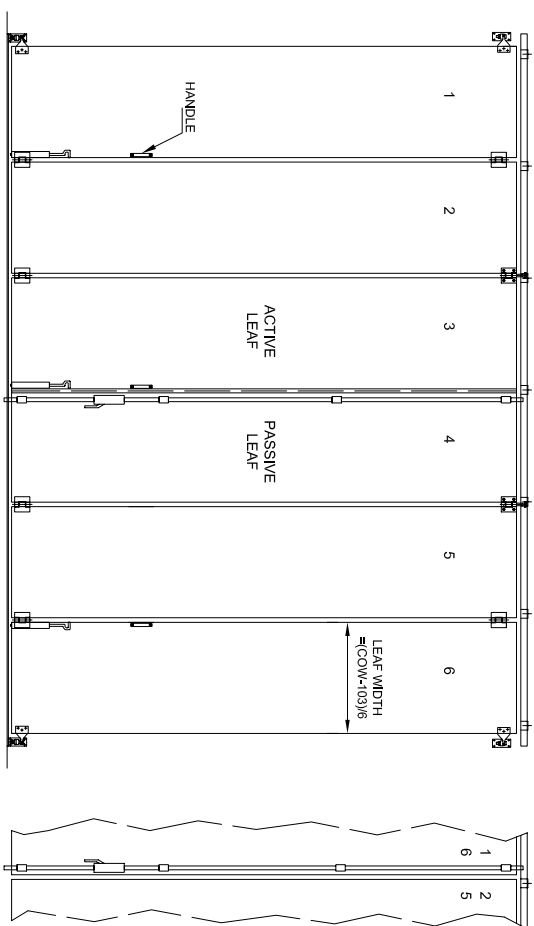
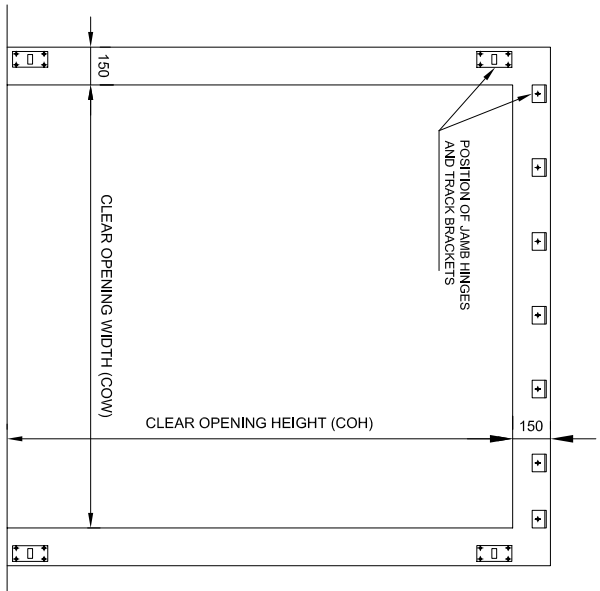
OTHER - PLEASE SPECIFY

SITE DETAILS

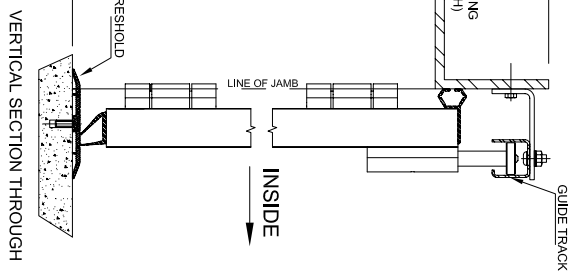
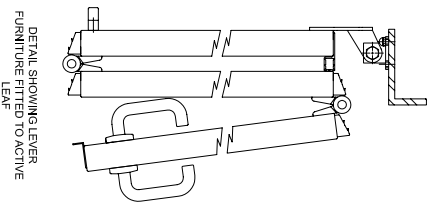
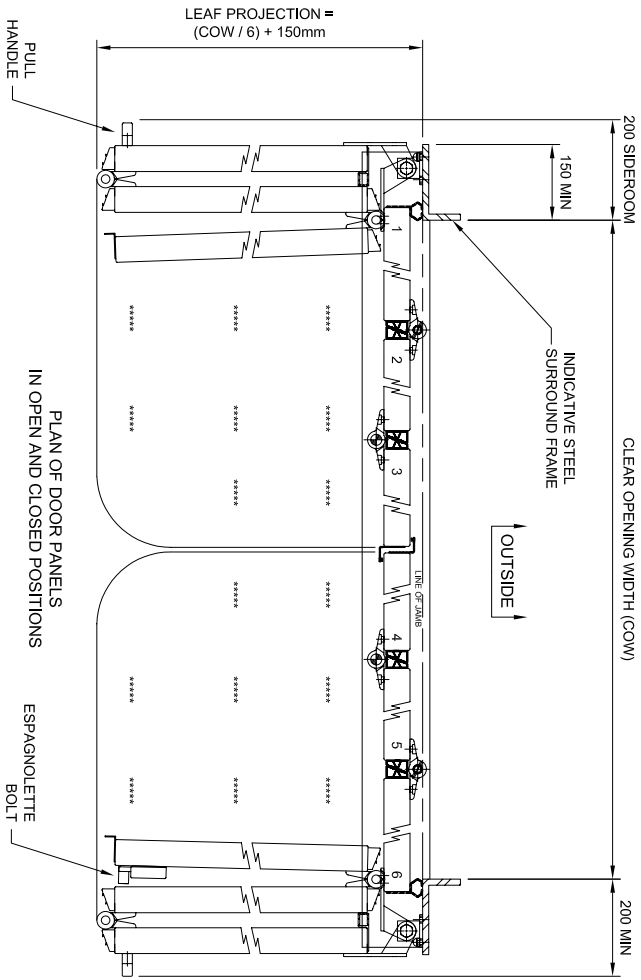
OPENING / DOOR REF.

DATE DRAWN BY

DRAWING No. SWT33M-5007



DETAIL SHOWING OPTION FOR ESPAGNOLETTE BOLT



MAX OPENING SIZES		
UP TO 5700mm WIDE MAX 3000mm HIGH	UP TO 5400mm WIDE MAX 4000mm HIGH	UP TO 5100mm WIDE MAX 4800mm HIGH

SWIFT 3+3 LEAF, MANUALLY OPERATED